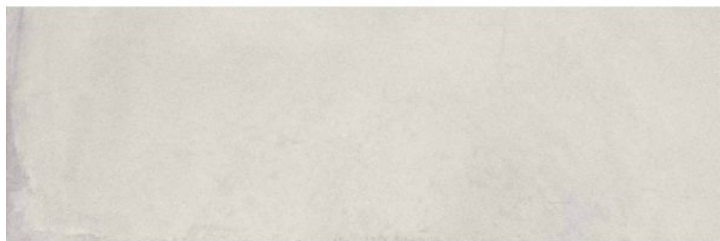


CHELSEA

Chelsea Gris

PRICE / M2 (VAT INCLUDED)



CHARACTERISTICS

Finish: Satin

Rectified sides

Degree of detonation: V3 (Medium)



Installation

Installation: Coating

White Body

White paste

Suitable to tile indoor walls such as bathrooms and kitchens.



mm



Destonified

Chelsea

Chelsea, English rigour. Chelsea is one of the various facets offered by ceramic cement to cover not only the walls of kitchens and bathroom spaces but also those in other rooms of the house that are full of personality. This elegant range stands out for the neutrality of the soft cement, with the ceramic piece being the key decorative piece in the space. Chelsea is available in three colours: blanco, grey and arena, and in the format 30x90,2 R cm.



MANUALS AND RESOURCES



[Product technical certificate](#)

#technology_text

White Body**White paste**

Suitable to tile indoor walls such as bathrooms and kitchens.