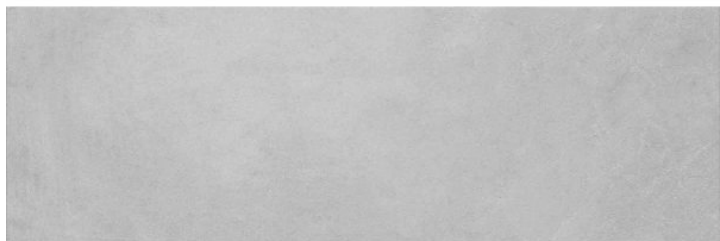


TAILOR

Tailor Gris 40X120 R

PRICE / M2 (VAT INCLUDED)



CHARACTERISTICS

Finish: Mate

Boxes / Pallet: 40

Rectified sides

Kg / Box: 28

Kg / Pallet: 1114

Degree of detonation: V3 (Medium)

Material: White body wall tile

Pieces / Box: 3

M2 / Box: 1.44

M2 / Pallet: 57.6



White Body



mm



Destonified

Installation

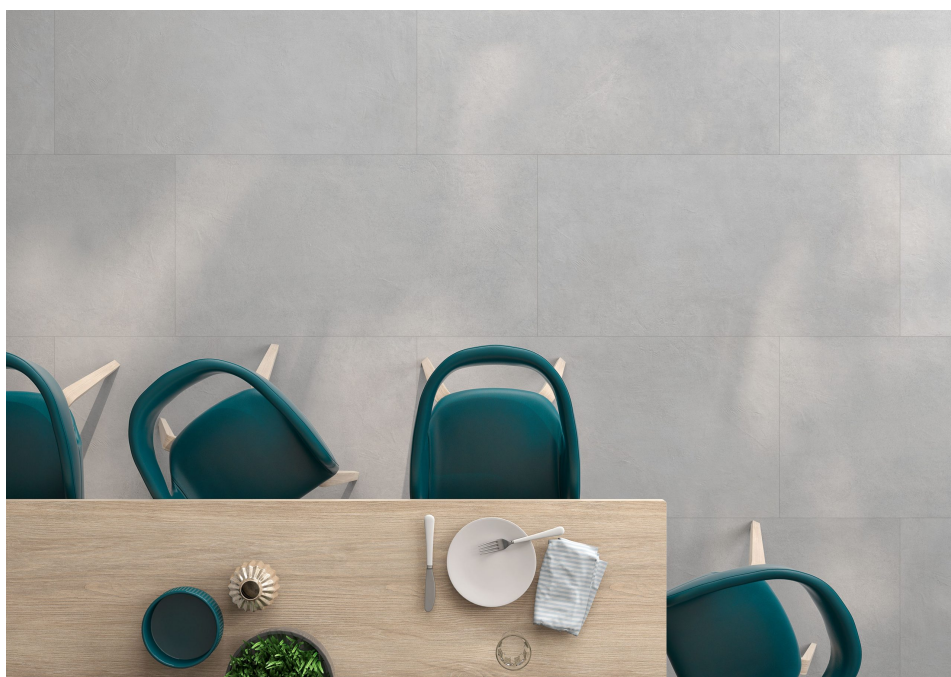
Installation: Coating

White paste

Suitable to tile indoor walls such as bathrooms and kitchens.

Tailor

Eternal style. Industrial-inspired cement for projects that never go out of style. Tailor finds its inspiration in the polished floors of the first lofts in New York City, renovating them in a perfect colour palette for those who plan spaces that need to adapt to multiple needs. In Beige, Blanco, Gris, this collection replicates the charm of the tiny cracks and irregularities of the floor of factories and garages, adding the outstanding performance of glazed porcelain tiles with a satin finish. In different formats and dimensions, its unique texture gives way to trying out geometrical combinations that highlight the charm of urban beauty.



#technology_text

White Body

White paste

Suitable to tile indoor walls such as bathrooms and kitchens.