



Roca

Fire



LM Fire MT 120x250 R

Fire

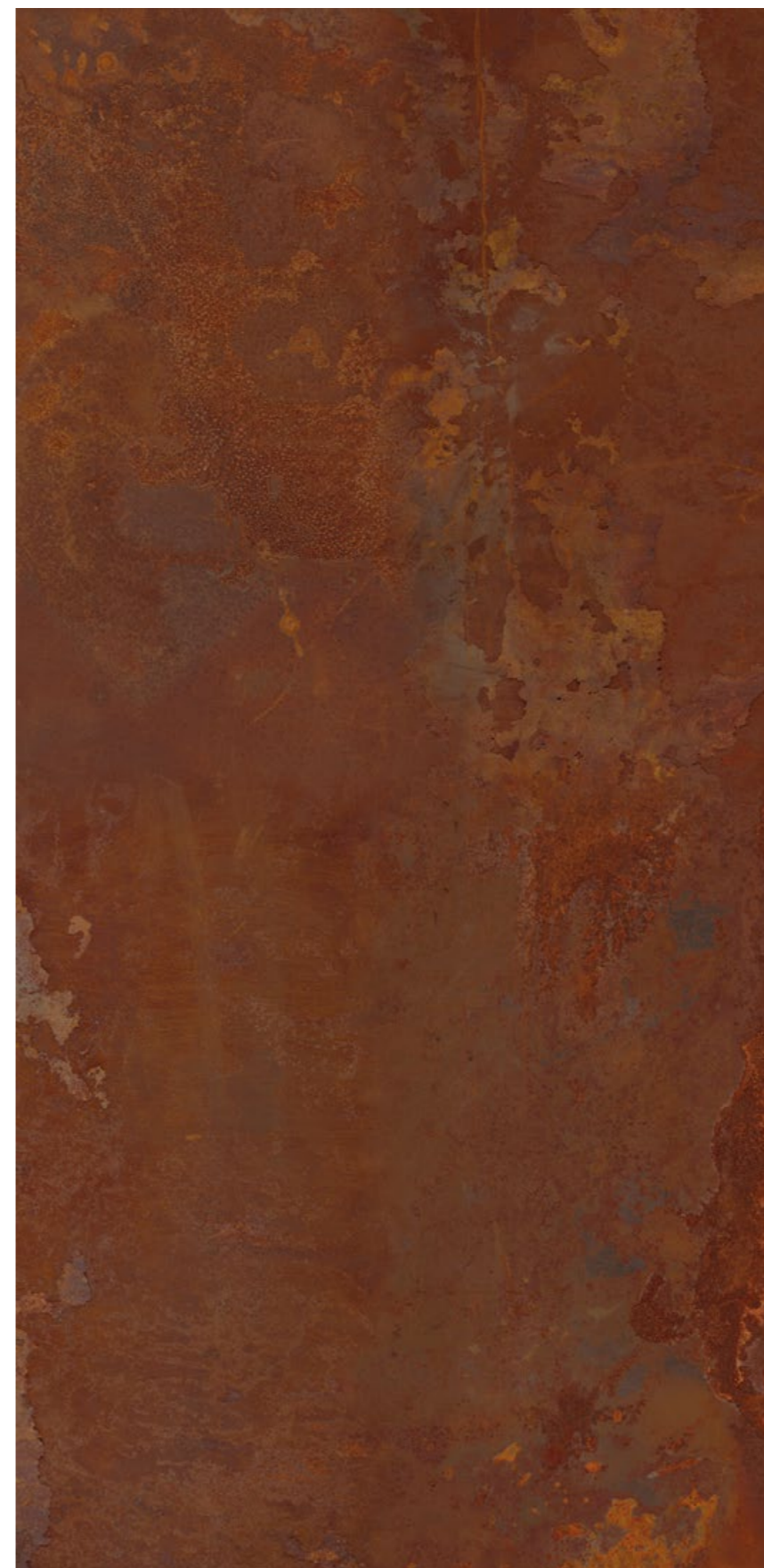
Porcelánico Esmaltado / Glazed Porcelain

thinbig®

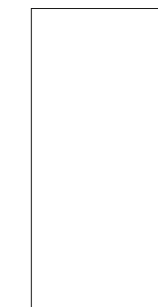
CONCRETES



120x250 R
48"x100" R



Fire



LM Fire MT
120x250 R / 48"x100" R
FPN00MR381 / P1750
G4 **C1** **R9**

120x250 R / 48"x100" R

1 Pzs.
62 Kg.
2,990 m²

14 Box
864 Kg.
41,860 m²

FOLLOW US ON:



@RocaTile_es



@RocaTileSpain

**Toda la información
en [rocatiles.com](https://www.rocatiles.com)**



Roca Tiles Spain, S.L.

Pol. Industrial Belcaire - Calle C, nº 34
12600 La Vall d'Uixó - Castellón - SPAIN
Tel +34 937 395 119